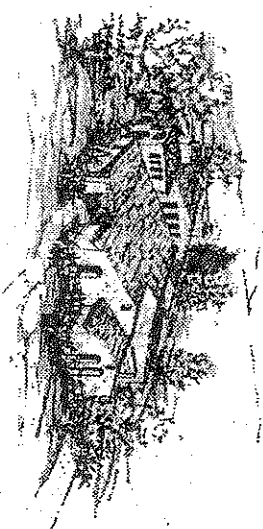


DAVIDSON COMMUNITIES LLC

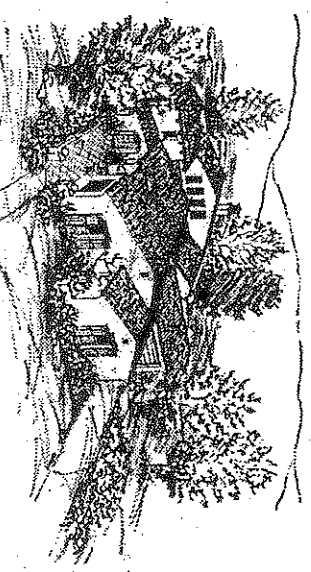
Phone 858-259-8100

www.davidsoncommunities.com

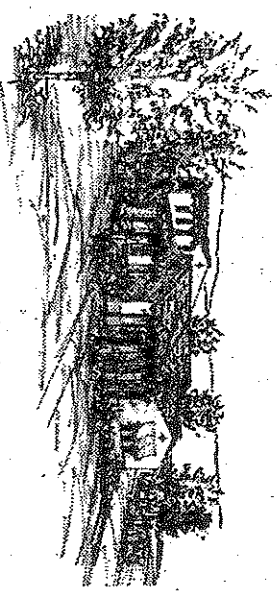
preliminary 5/23/01.



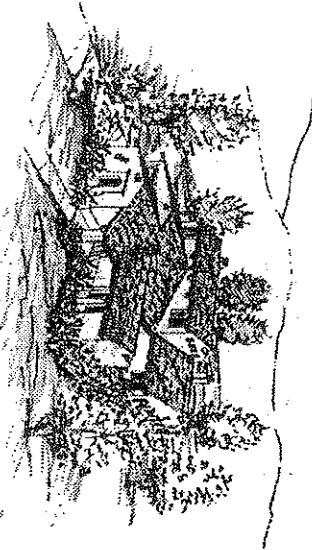
OVIADO
Elevation 478



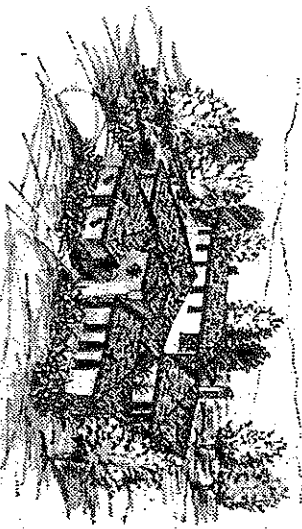
OVIADO
Elevation 538



OVIADO
Elevation 538



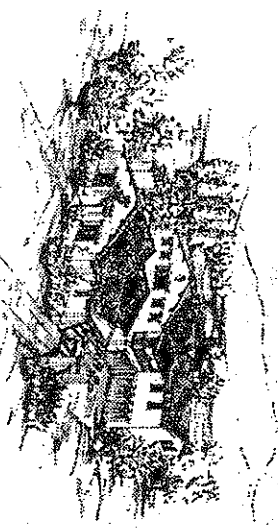
VILLA ALEGRA
Elevation 47



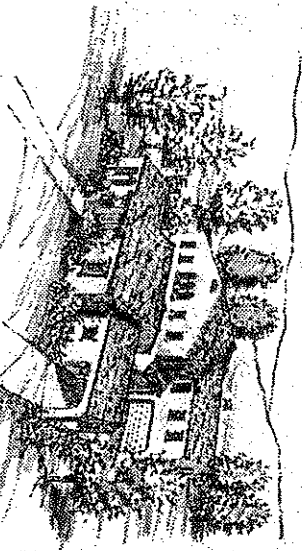
VILLA ALEGRA
Elevation 57



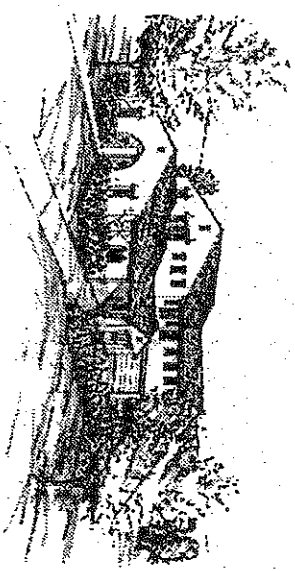
VILLA ALEGRA
Elevation 57



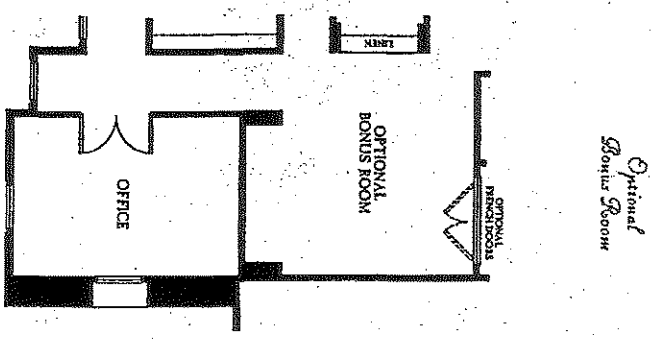
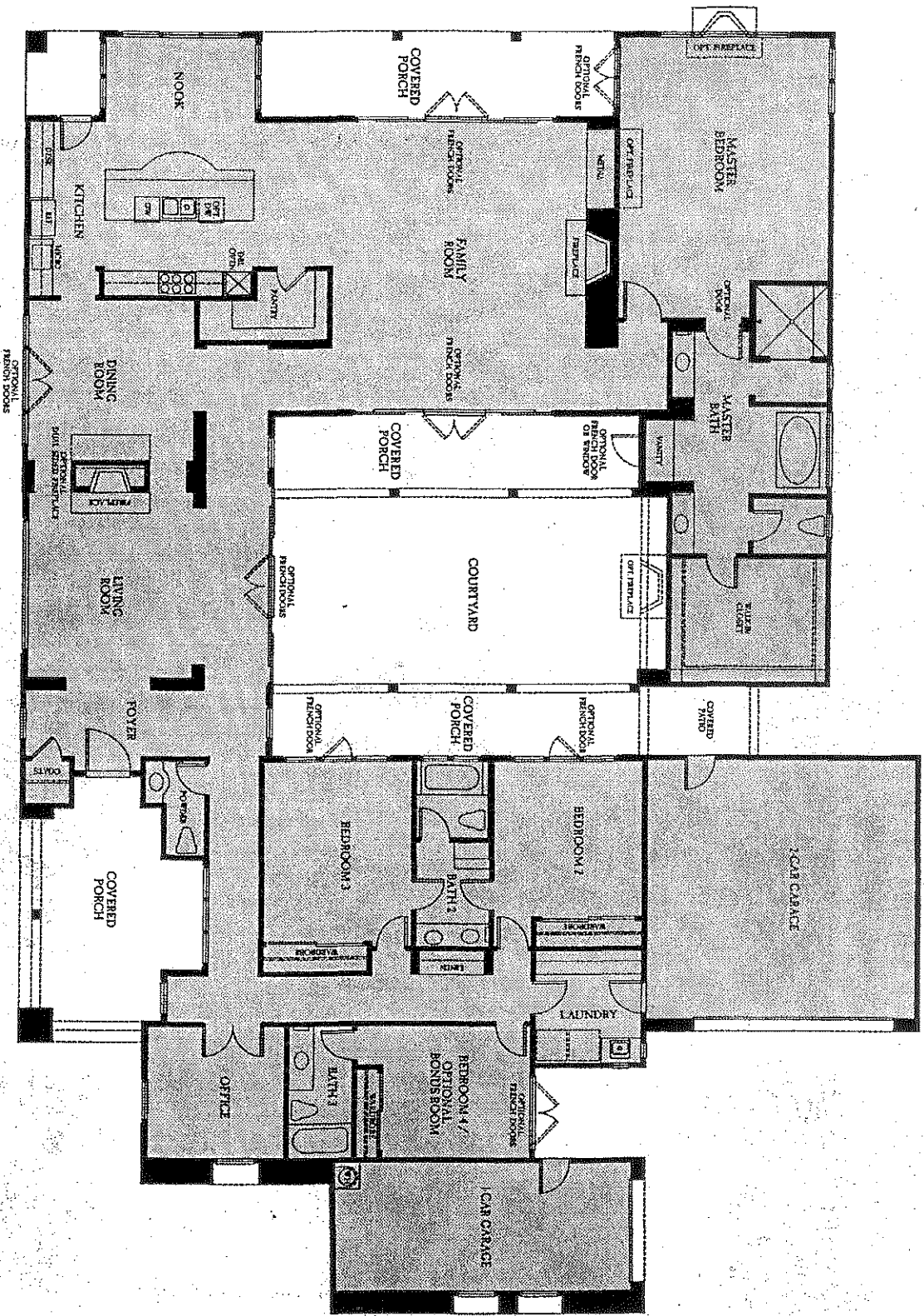
EL PARAISO
Elevation 478



EL PARAISO
Elevation 538



EL PARAISO
Elevation 538

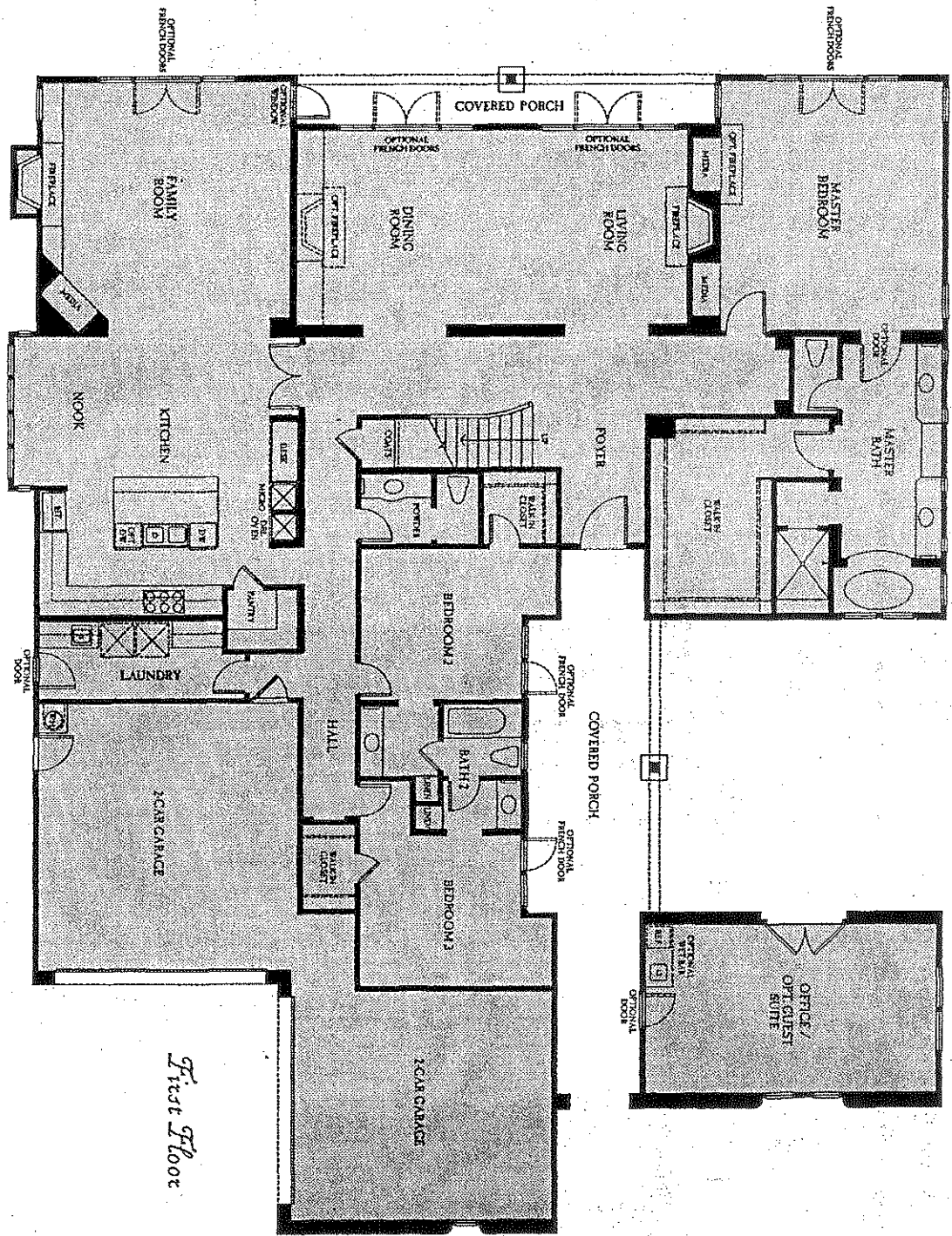


Optional Bonus Room

OVJADO

Single Story, 4 Bedrooms,
3.5 Baths, Office, 2 + 1 Car Garage

Residence:
3,928
S.A., T.T.

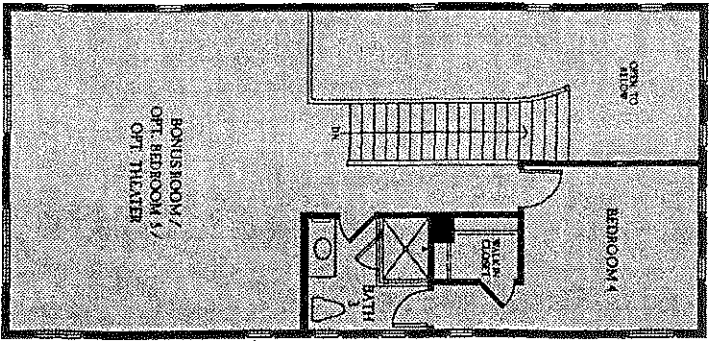


First Floor

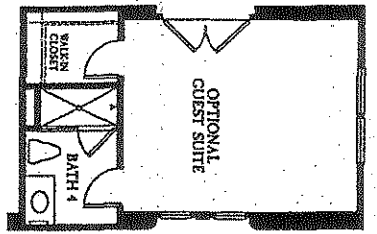
VILLA ALEGRA

Two Story, 4 Bedrooms, 3.5 Baths, Office,
2 + 2 Car Garage plus Bonus Room

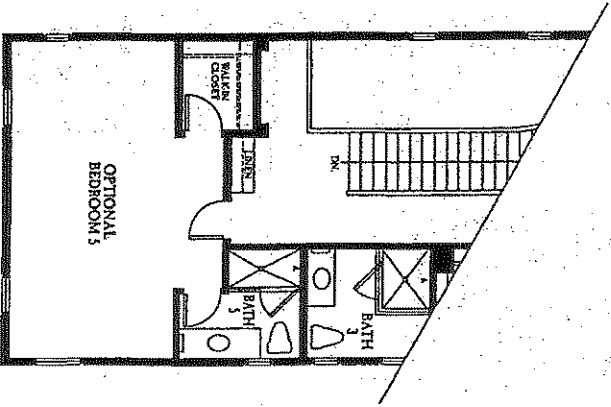
Residence:
4,580
S.A.F.T.



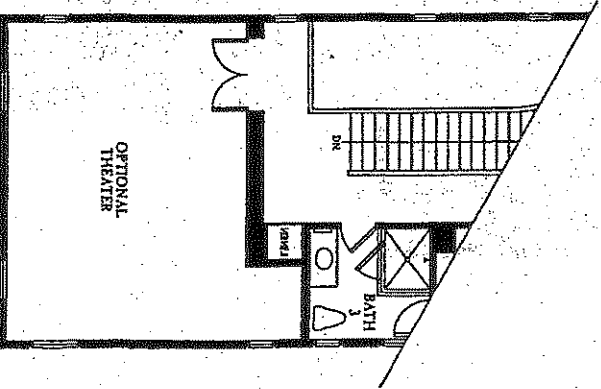
Second Floor



Optional Guest Suite with Stack 4

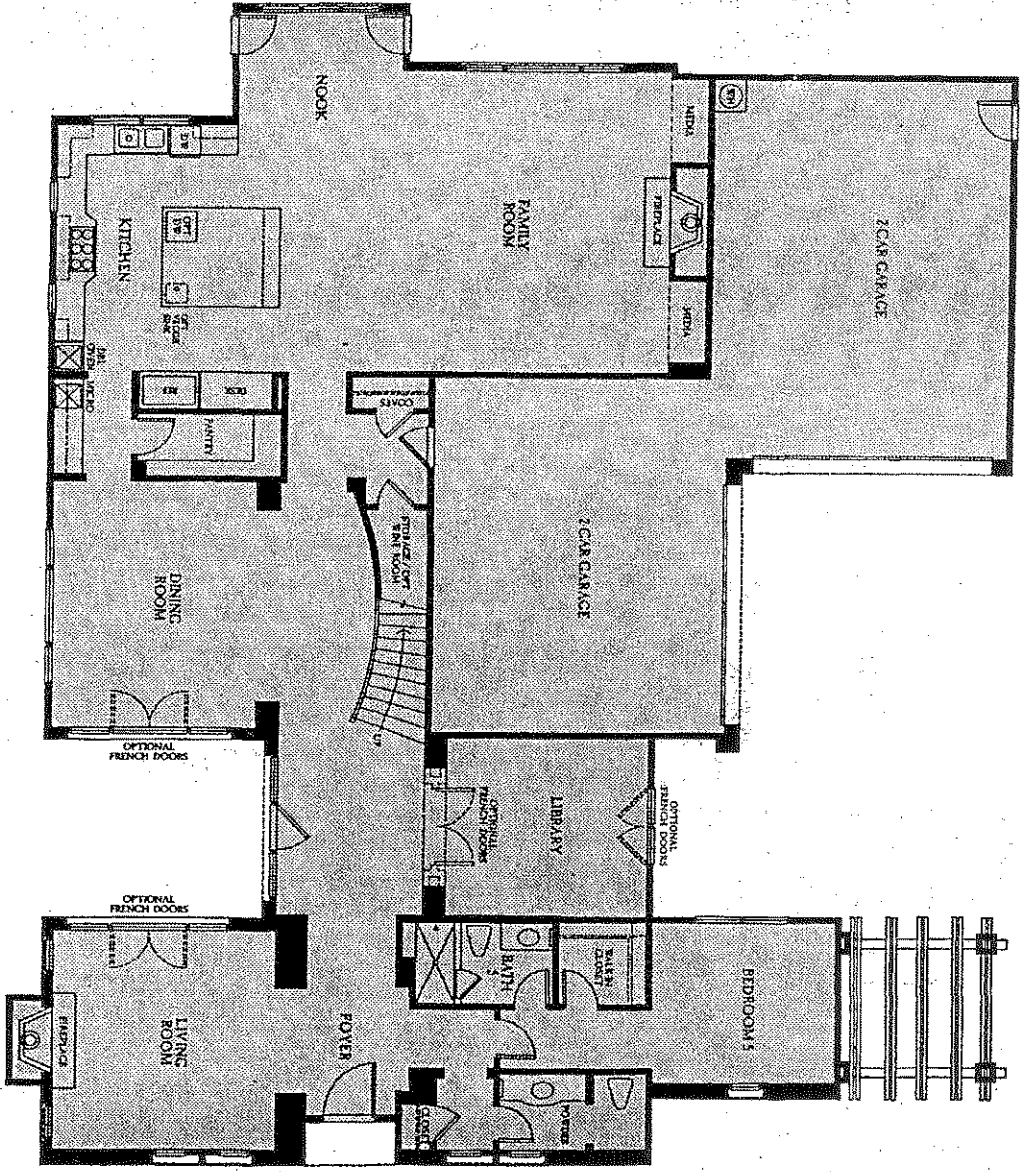


Optional Bedroom 5 with Stack 5



Optional Theater

VILLA ALEGRA
Some Options



First Floor

EL PARAISO
 Two Story, 5 Bedrooms, 5.5 Baths, Library,
 2 + 2 Car Garage plus Bonus Room
 Residence:
 5,000
 S.E.F.T.

HOME FEATURES

A Noteworthy Sense of Arrival

- Old world architecture harmonized with individually-selected color palettes
- Authentic clay-tile roofing selected by a design professional to enhance each home's location and color scheme
- An oversized Southwest® stained wood front entry door with white bronze hardware
- Custom-designed old world exterior lighting to enhance the architectural styling of each home.

Refinement Abounds

- Raised-panel interior doors
 - A completely integrated multi-media wiring system prepares your home to be "powered for interactive living."
 - Two wood-burning fireplaces, living room and family room, detailed in a rich custom surround
 - Satin nickel interior door hardware
 - Beautifully-crafted iron & maple staircase
 - Multi-zoned gas-forced air heating
 - Sill & Apron in all water-resistant locations
 - Handset ceramic tile in secondary and powder baths in choice of white, canvas or almond
- Culinary Delights*
- Handsome European cabinetry in harvest pecan, honey maple or white maple with concealed hinges, adjustable shelving and fully lined

Slab granite countertops

- Thermador® 6 burner cooktop and hood,
- Kitchenaid® dual oven, dishwasher and microwave, and 48" sub-zero refrigerator
- Waterworks® faucet controls
- Double-compartmentalized white cast iron kitchen sink
- Insinkerator heavy-duty, low noise level disposal
- Gourmet center islands, walk-in pantries and roomy breakfast nooks
- Florescent under cabinet task lighting
- Under cabinet electrical outlet bars

Luxurious Master Suites

- Kohler® vitrage tub and Kalista® basin and commode
- Waterworks® faucet, tub & shower controls
- Spacious walk-in closets
- Cabinetry in 3 choices to match kitchen selection
- Marble 12" x 12" tiles in master bath with dual basins and a vanity
- Mirrored salon closet doors

Davidson Construction

- Special sand float exterior stucco finish complements the inspired old world styling
- Weather-proofed exterior electrical outlets
- Gas connection for external barbecue
- Weatherstripping on all exterior doors

Energy efficient 75 gallon water heater with recirculating hot water system

- Custom rounded wall corners
- Pressure balancing shower valves
- Copper overhead plumbing
- Post tensioned foundation
- I-joist truss system for increased strength and noise reduction
- Dual-pane windows

A Singular Place

- Oversized lots averaging 1/2 acre
- Del Mar school district
- Close to new shopping, library, parks, golf course & beaches
- Easy freeway access
- Close proximity to dedicated open space, hiking trails and horseback riding

Optional Appointments

- We offer a long list of optional detailing including room selections to suit your lifestyle.
- We invite you to individualize your new Davidson home at our Design Center.
- Qualified design coordinators are available to assist you with your selections.